

# Bariatric No-Slip Wedge™

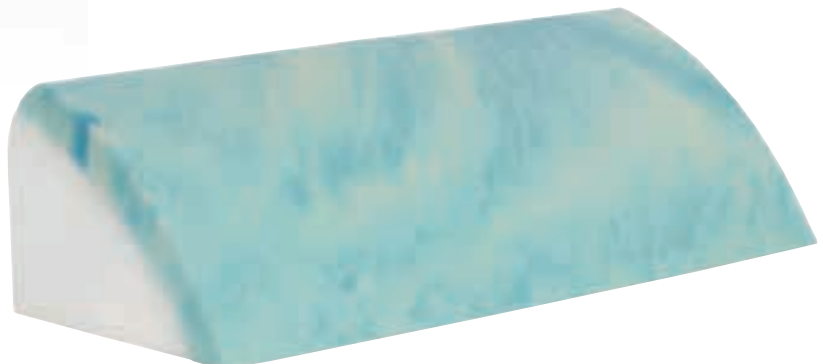
## 30-Degree Side Lying Positioning

The Bariatric No-Slip Wedge™ is designed to provide consistent, reliable 30-degree turning for patients weighing up to 650 pounds / 295 kg. A firm, high-density core supports heavier weight while providing shape retention. A thick layer of high-density, gel infused Visco-Elastic Foam on the patient contact surface enhances comfort and optimizes pressure redistribution. The convex shape of the sides that face both the patient and caregiver create a logroll shape, which also helps to improve shape retention while in use. The Bariatric No-Slip Wedge™ is a cost effective, user friendly component of your bariatric pressure management and turning protocol.

- Consistent and reliable way to maintain 30-degrees of lateral rotation for bariatric patients.
- 650 pound / 295 kg weight capacity.
- Designed to retain the 30-degree shape under heavy weight bearing conditions.
- All materials are antimicrobial, latex-free and free of Forever Chemicals, (PFAS).
- Reusable version is fitted with a moisture impermeable cover, which has a no-slip material on the bottom.
- Dartex® 4-way stretch cover option is available, which has heat sealed seams.



**Reusable Bariatric No-Slip Wedge™**

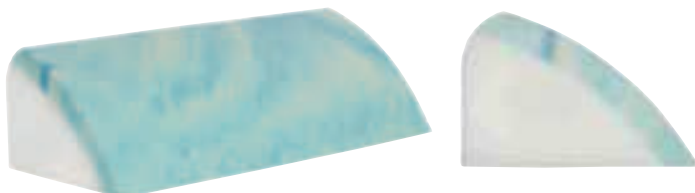


**Disposable Bariatric No-Slip Wedge™**

# Bariatric No-Slip Wedge™

## 30-Degree Side Lying Positioning

### Specifications:



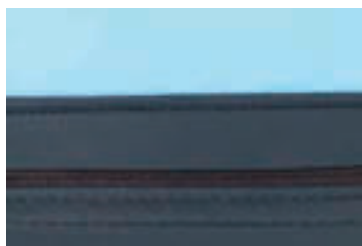
#### **Bariatric No-Slip Wedge™ Disposable:**

Made of high-density, antimicrobial foam. The dimensions are 26"W x 12" Deep x 8" Tall. The Bariatric No-Slip Wedge™ meets or exceeds the California TB 117-2013 fire safety standard.



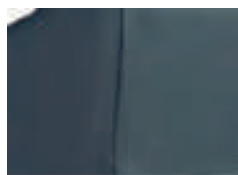
#### **Bariatric No-Slip Wedge™ Reusable:**

Made of high-density, antimicrobial foam. The dimensions are 26"W x 12" Deep x 8" Tall. Upholstered with a moisture-proof, reusable, nylon taffeta fabric cover. No-Slip fabric is used on the bottom to prevent movement when in use. The Bariatric No-Slip Wedge™ meets or exceeds the California TB 117-2013 fire safety standard.



#### **Fluid Resistant Zipper Enclosure -**

The bottom half of the zipper enclosure is backed by a raised border, while the top half of the zipper is covered by a waterfall flap. The two fabric barriers help to prevent fluid ingress.



#### **Dartex® Cover Option -**

Dartex® is a four-way stretch polyurethane material. When the Dartex® cover option is chosen, seams are heat sealed, which helps to further prevent fluid ingress.

### Ordering Information:

Order Number	Reusable Bariatric No-Slip Wedge™	Warranty	Patient Weight
NSW-RB	Bariatric No-Slip Wedge™, Reusable, Nylon / No-Slip Cover, 26" Length	One Year	<650 Pounds
NSW-RB-DTX	Bariatric No-Slip Wedge™, Reusable, Dartex® / No-Slip Cover, 26" Length	One Year	<650 Pounds
NSW-RB-ASNS	Bariatric No-Slip Wedge™, Reusable, All Sides No-Slip Cover, 26" Length	One Year	<650 Pounds
	<b>Disposable Bariatric No-Slip Wedge™</b>		
NSW-DB	Bariatric No-Slip Wedge™, Disposable, Bare Foam, 26" Length	N/A	<650 Pounds

*Custom lengths available upon request for all configurations.*



P.O. Box 488  
Sarasota, FL 34230  
Phone - 866.736.8484  
Fax - 941.359.6939  
www.heelzup.com  
hello@heelzup.com

**Warranty:** This warranty applies to defects in structure, workmanship and materials and only to damages arising from normal hospital usage on a non-prorated basis for a period of one (1) year for reusable models from the date of purchase. Damages arising from abnormal use such as those caused by needle punctures, burns, chemicals, negligent use or improper care or cleaning are excluded from coverage.

**Quality Positioners for Health, Safety and Comfort**