

# HeelZup<sup>®</sup> Heel Suspension Cushion



One of the leading challenges for the wound care community is heel pressure injuries. Heels are naturally susceptible to pressure injuries and even the most advanced support surfaces can prove to be ineffective at prevention and treatment. HeelZup<sup>®</sup> is designed to overcome some of the drawbacks of traditional heel offloading methods. Heel “boots” require frequent removal to inspect the skin integrity of the leg, ankle and foot. Challenges can also arise from boot straps or fasteners that are secured too tightly or loosely. Pillows can slide out of place or compress easily, leaving vulnerable heels in contact with the surface of the mattress. The HeelZup<sup>®</sup> Heel Suspension Cushion offers a practical, comfortable and cost-effective way to offload pressure from the heels:

- High resiliency foam provides excellent pressure redistribution.
- Elevates heels a minimum of one inch off of the mattress surface, while providing comfortable support of the legs.
- Raised side bolsters prevent the legs from falling off of the sides of the cushion.
- To adjust elevation height or for enhanced comfort, a conventional pillow can be added on top and the raised bolsters will hold the pillow in place.
- Urethane backed nylon cover reduces friction and shear, while the No-Slip bottom material helps the cushion to stay neatly in place. No need for constant maintenance and adjustment.
- Manufactured of anti-microbial, hypo-allergenic and latex-free materials.
- Available in both single patient use and reusable models.
- Cooler on the ankle, foot and heel than heel boot type products.



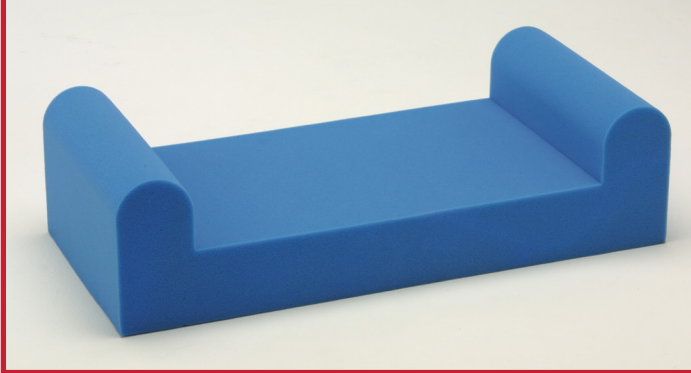
P.O. Box 488  
Sarasota, FL 34230  
Phone - 866.736.8484  
Fax - 941.359.6939  
[www.heelzup.com](http://www.heelzup.com)  
[hello@heelzup.com](mailto:hello@heelzup.com)



HeelZup with a pillow on top. The raised side bolsters help to keep the pillow and the legs in place so the heels remain suspended.

**Quality Positioners for Health, Safety and Comfort**

## Specifications:



### HeelZup<sup>®</sup> Disposable:

Manufactured of high-density, anti-microbial, hypoallergenic foam. The standard width is 30" with 4" elevated leg bolsters on both sides. The calf bed will allow free lateral movement while the bolsters prevent the legs from falling off the cushion. HeelZup<sup>®</sup> meets the specifications in California Upholstery Provisions as stated in Technical Bulletin #117-2013.

### HeelZup<sup>®</sup> Reusable:

Manufactured of high-density, anti-microbial, hypo-allergenic foam. The standard width is 30" with 4" elevated leg bolsters on both sides. The calf bed will allow free lateral movement while the bolsters prevent the legs from falling off the cushion. A moisture proof, reusable coated nylon fabric cover with No-Slip bottom is fitted to the cushion. HeelZup<sup>®</sup> meets the specifications in California Upholstery Provisions as stated in Technical Bulletin #117-2013.

## Ordering Information:

U.S. Patent Number 6,634,045

Order Number	Description	Patient Height	Patient Weight
HZ13RPS	HeelZup Reusable PetiteSoft, 13" Depth	Up to 5'6"	<165 Pounds
HZ14R	HeelZup Reusable, 14" Depth - Standard Size	Up to 6' Tall	<350 Pounds
HZ15R	HeelZup Reusable, 15" Depth	Over 6' Tall	<350 Pounds
HZ14RB	HeelZup Reusable Bariatric, 14" Depth	Up To 6' Tall	<650 Pounds
<b>Disposable Models</b>			
HZ13DPS	HeelZup Disposable PetiteSoft, 13" Depth	Up to 5'6"	<165 Pounds
HZ14D	HeelZup Disposable, 14" Depth - Standard Size	Up to 6'Tall	<350 Pounds
HZ15D	HeelZup Reusable, 15" Depth	Over 6'Tall	<350 Pounds
HZ14DB	HeelZup Disposable Bariatric, 14" Depth	Up to 6' Tall	<650 Pounds



P.O. Box 488  
 Sarasota, FL 34230  
 Phone - 866.736.8484  
 Fax - 941.359.6939  
 www.heelzup.com  
 hello@heelzup.com

**Warranty:** This warranty applies to defects in structure, workmanship and materials and only to damages arising from normal hospital usage on a non-prorated basis for a period of three (3) years for reusable models from the date of purchase. Damages arising from abnormal use such as those caused by needle punctures, burns, chemicals, negligent use or improper care or cleaning are excluded from coverage.