

HeelZup™

Therapeutic Heel Elevating Cushion

One of the leading challenges for the wound care community is heel pressure ulceration. Heels are naturally susceptible to pressure ulcers and even the most advanced support surfaces prove to be ineffective at prevention and treatment. Existing modalities of heel pressure ulcer prevention and treatment have many drawbacks. Heel “boots” require frequent removal to inspect the skin integrity of the lower leg. Pillows, which slide out of place and compress very easily are also a high maintenance and unreliable solution to the problem. The HeelZup™ Therapeutic Heel Elevating Cushion provides the most practical solution to this complex problem:

- Exceeds Guidelines for the use of foam as a pressure reduction modality.
- Elevates heels a minimum of one inch off of the surface, while supporting the lower leg from the achilles area to the knee.
- Raised side bolsters prevent legs from falling off of the sides of the cushion.
- Stays neatly in place and does not require constant maintenance and adjustment.
- Coated nylon cover reduces friction and shear, while the No-Slip bottom material helps the cushion to stay neatly in place. No need for constant maintenance and adjustment.
- Manufactured of high-density, anti-microbial, hypo-allergenic and latex-free foam.
- Available in both single patient use and reusable models.



Intensive Therapeutics, Inc.

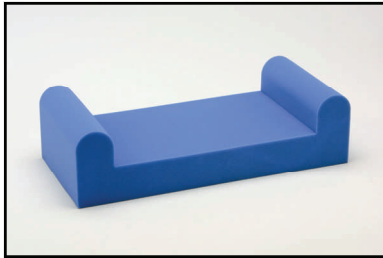
U.S. Patent # 6,634,045

Phone: 866.736.8484
Fax: 941.359.6939
www.heelzup.com



P.O. Box 488
Sarasota, FL
34230

Specifications:



HeelZup™ Disposable:

Manufactured of high-density, anti-microbial, hypoallergenic foam. The standard width is 30" with 4" elevated leg bolsters on both sides. The calf bed will allow free lateral movement while the bolsters prevent the legs from falling off of the cushion. HeelZup™ meets or exceeds the specifications in California Upholstery Provisions as stated in Technical Bulletin #117.

HeelZup™ Reusable:

Manufactured of high-density, anti-microbial, hypo-allergenic foam. The standard width is 30" with 4" elevated leg bolsters on both sides. The calf bed will allow free lateral movement while the bolsters prevent the legs from falling off of the cushion. A moisture proof, reusable coated nylon fabric cover with No-Slip bottom is sewn onto the cushion. The cover can be cleaned with standard cleaning procedures, using properly diluted solutions. HeelZup™ meets or exceeds the specifications in California Upholstery Provisions as stated in Technical Bulletin #117.

Ordering Information:

Order Number	Description	Patient Height	Patient Weight
HZ13RPS	HeelZup™ Reusable PetiteSoft™, 13" Depth	Up to 5'5"	150 Pounds or Under
HZ14R STANDARD SIZE	HeelZup™ Reusable, 14" Depth	Up to 6' Tall	Up to 300 Pounds
HZ14RLP	HeelZup™ Reusable <i>Low Profile</i> , 14" Depth, 2.5" Thick	Up to 6' Tall	Up to 300 Pounds Intended for times when less hip flexion or leg elevation is desired.
HZ15R	HeelZup™ Reusable, 15" Depth	Over 6' Tall	Up to 300 Pounds
HZ14RB	HeelZup™ Reusable Bariatric, 14" Depth	Up to 6' Tall	Over 300 Pounds

Order Number	Description	Patient Height	Patient Weight
HZ13DPS	HeelZup™ Disposable PetiteSoft™, 13" Depth	Up to 5'5"	150 Pounds or Under
HZ14D STANDARD SIZE	HeelZup™ Disposable, 14" Depth	Up to 6' Tall	Up to 300 Pounds
HZ14DLP	HeelZup™ Disposable <i>Low Profile</i> , 14" Depth	Up to 6' Tall	Up to 300 Pounds Intended for times when less hip flexion or leg elevation is desired.
HZ15D	HeelZup™ Disposable, 15" Depth	Over 6' Tall	Up to 300 Pounds
HZ14DB	HeelZup™ Disposable Bariatric, 14" Depth	Up to 6' Tall	Over 300 Pounds

Warranty:

This warranty applies only to defects in structure, workmanship and materials and only to damages arising from normal hospital usage on a non-prorated basis for a period of six (6) months for disposable, covered models and three (3) years for reusable models from the date of purchase. Damages arising from abnormal use such as those caused by needle punctures, burns, chemicals, negligent use or improper care or cleaning are excluded from coverage. Manufacturer will pay shipping charges incurred in connection with this warranty during the first year, thereafter, those charges are the facilities' or dealer's sole responsibility.